

# S&P Sector Indices

## Equity Indices |



### BLOOMBERG<sup>SM</sup> Homepages:

SPXU <GO>: U.S. Equities

SPXI <GO>: Global Equities

For more information visit:

[www.seemoreindices.com/Sectors](http://www.seemoreindices.com/Sectors)

For comprehensive index data visit

Standard & Poor's Index Data Platform

(IDP): [www.sp-indexdata.com](http://www.sp-indexdata.com)

S&P Thought Leadership is available at:

[www.SPindices.com](http://www.SPindices.com)

### S&P Custom Indices:

[custom\\_index@standardandpoors.com](mailto:custom_index@standardandpoors.com)

### Contact Us:

[index\\_services@standardandpoors.com](mailto:index_services@standardandpoors.com)

New York	+1.212.438.2046
Toronto	+1.416.507.3200
London	+44.20.7176.8888
Tokyo	+813.4550.8463
Beijing	+86.10.6569.2919
Sydney	+61.2.9255.9870
Mumbai	+91.22.26598359
Dubai	+971.4.3727100

Standard & Poor's does not sponsor, endorse, sell or promote any S&P index-based investment product.

See what others don't,  
so you can do what others can't.®

## About the Index

The S&P Sector Indices highlight the sector characteristics of the S&P 500<sup>®</sup>, S&P Equal Weight, S&P Global 1200, and S&P Developed BMI ex-U.S. Indices. S&P Sector Indices offer U.S., global, and international opportunity sets of investable indices to investors around the world. For investors with sector-influenced views, the indices provide a myriad of options in market exposure, diversification, and currency movements.

### Classifying Companies Using GICS<sup>®</sup>

In response to the global financial community's need for one complete, consistent set of global sector and industry definitions, the Global Industry Classification Standard (GICS) was developed by S&P Indices and MSCI Barra in 1999. GICS enables market participants to identify and analyze companies from a common global perspective by breaking down the market into four levels of granularity: 10 sectors, 24 industry groups, 68 industries, and 154 sub-industries. Companies are classified primarily based on revenues, though earnings and market perception are also considered in classification analysis.

### Benefits & Objectives of S&P Sector Indices

S&P indices and sub-indices classified according to the GICS structure reflect the sector composition of the markets they represent. The sector weights of an S&P sector index provide the financial community with useful information about sector representation in different markets. For instance, since sectors behave differently globally, it is worthwhile to have the data to compare performance of sectors both now and historically.

S&P Indices offers sector index data on the following "parent" indices:

- *S&P 500*. Widely regarded as the best single gauge of the United States equity market, the index covers approximately 75% of the U.S. equity market capitalization.
- *S&P Equal Weight Index*. The equally-weighted version of the S&P 500 has the same constituents as the capitalization-weighted S&P 500, but each company is allocated a fixed weight of 0.20%.
- *S&P Global 1200*. Captures approximately 70% of the world's market capitalization across 29 markets. The index is a composite of seven headline indices: S&P 500, S&P Europe 350, S&P TOPIX 150, S&P/TSX 60, S&P/ASX All Australian 50, S&P Asia 50, and S&P Latin America 40.
- *S&P Developed BMI ex-U.S.* Tracking international developed market exposure while excluding the influence of the United States, this index covers 25 developed markets and more than 5,000 companies having at least US\$ 100 million in float market capitalization and a value traded of at least US\$ 50 million for the last 12-months, resulting in a very comprehensive and investable point of view.

### GICS Sector & Industry Group

<b>10</b>	<b>Energy</b>
1010	Energy
<b>15</b>	<b>Materials</b>
1510	Materials
<b>20</b>	<b>Industrials</b>
2010	Capital Goods
2020	Commercial & Professional Services
2030	Transportation
<b>25</b>	<b>Consumer Discretionary</b>
2510	Automobiles & Components
2520	Consumer Durables & Apparel
2530	Consumer Services
2540	Media
2550	Retailing
<b>30</b>	<b>Consumer Staples</b>
3010	Food & Staples Retailing
3020	Food, Beverage & Tobacco
3030	Household & Personal Products
<b>35</b>	<b>Health Care</b>
3510	Health Care Equipment & Services
3520	Pharmaceuticals, Biotechnology & Life Sciences
<b>40</b>	<b>Financials</b>
4010	Banks
4020	Diversified Financials
4030	Insurance
4040	Real Estate
<b>45</b>	<b>Information Technology</b>
4510	Software & Services
4520	Technology Hardware & Equipment
4530	Semiconductors & Semiconductor Equipment
<b>50</b>	<b>Telecommunication Services</b>
5010	Telecommunication Services
<b>55</b>	<b>Utilities</b>
5510	Utilities

### GICS Sector

#### 10 Energy

Comprises companies whose businesses are dominated by either of the following activities: The construction or provision of oil rigs, drilling equipment and other energy related equipment and services, including seismic data collection. Companies engaged in the exploration, production, marketing, refining and/or transportation of oil and gas products, coal and other consumable fuels.

#### 15 Materials

Encompasses a wide range of commodity-related manufacturing industries. Included in this sector are companies that manufacture chemicals, construction materials, glass, paper, forest products and related packaging products, and metals, minerals and mining companies, including producers of steel.

#### 20 Industrials

Includes companies whose businesses are dominated by one of the following activities: The manufacture and distribution of capital goods, including aerospace & defense, construction, engineering & building products, electrical equipment and industrial machinery. The provision of commercial services and supplies, including printing, environmental, office and security services. The provision of professional services, including employment and research & consulting services. The provision of transportation services, including airlines, couriers, marine, road & rail and transportation infrastructure.

#### 25 Consumer Discretionary

Encompasses those industries that tend to be the most sensitive to economic cycles. Its manufacturing segment includes automotive, household durable goods, textiles & apparel and leisure equipment. The services segment includes hotels, restaurants and other leisure facilities, education and specialized consumer services, media production and services, and consumer retailing and related services.

#### 30 Consumer Staples

Comprises companies whose businesses are less sensitive to economic cycles. It includes manufacturers and distributors of food, beverages and tobacco and producers of non-durable household goods and personal products. It also includes food & drug retailing companies as well as hypermarkets and consumer super centers.

#### 35 Health Care

Encompasses two main industry groups. The first includes companies who manufacture health care equipment and supplies or provide health care related services, including distributors of health care products, providers of basic health-care services, and owners and operators of health care facilities and organizations. The first group also includes companies operating in the health care technology industry. The second regroups companies primarily involved in the research, development, production and marketing of pharmaceuticals, biotechnology and life sciences products.

#### 40 Financials

Contains companies involved in activities such as banking, mortgage finance, consumer finance, specialized finance, investment banking and brokerage, asset management and custody, corporate lending, insurance, and financial investment, and real estate, including REITs.

#### 45 Information Technology

Covers the following general areas: Technology software & services, including companies that primarily develop software in various fields such as the Internet, applications, systems, databases management and/or home entertainment, and companies that provide information technology consulting and services, as well as data processing and outsourced services; secondly Technology Hardware & Equipment, including manufacturers and distributors of communications equipment, computers & peripherals, electronic equipment and related instruments; and thirdly Semiconductors & Semiconductor Equipment Manufacturers.

#### 50 Telecommunication Services

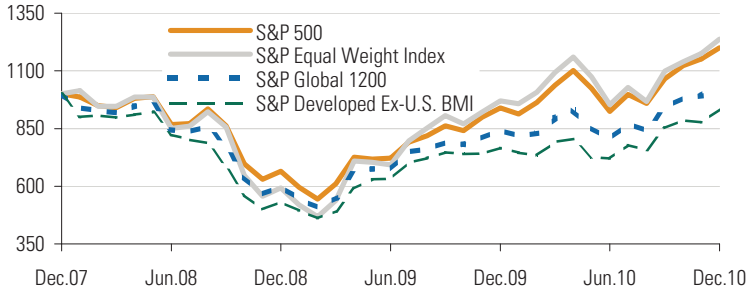
Contains companies that provide communications services primarily through a fixed-line, cellular, wireless, high bandwidth and/or fiber optic cable network.

#### 55 Utilities

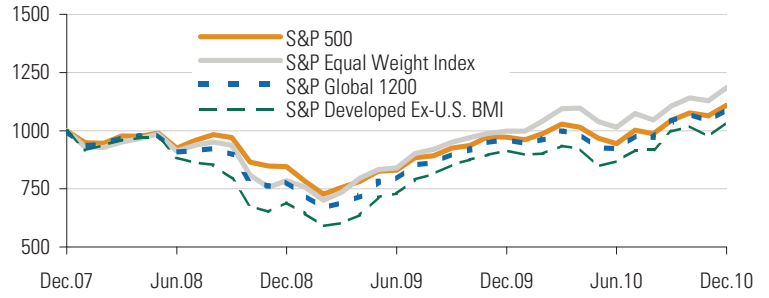
Encompasses those companies considered electric, gas or water utilities, or companies that operate as independent producers and/or distributors of power.

3 Year Historical Performance

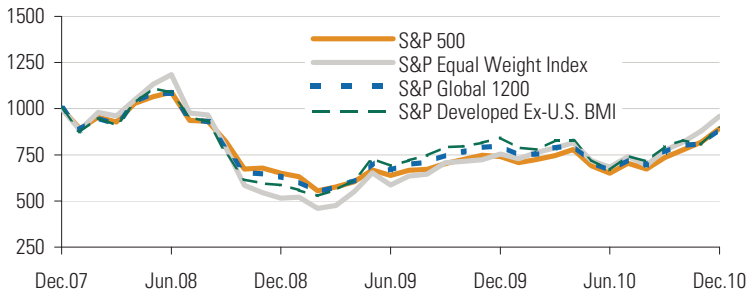
Consumer Discretionary



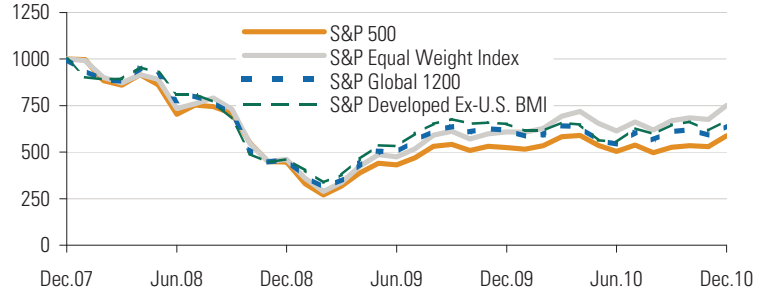
Consumer Staples



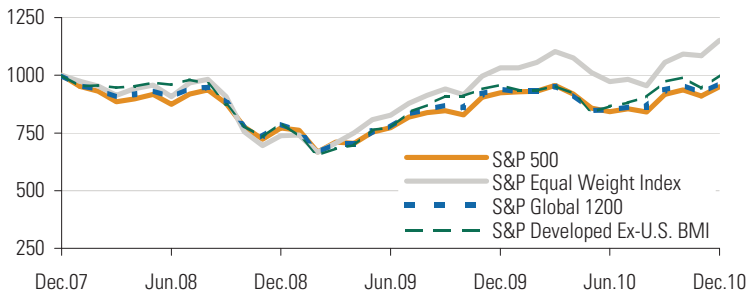
Energy



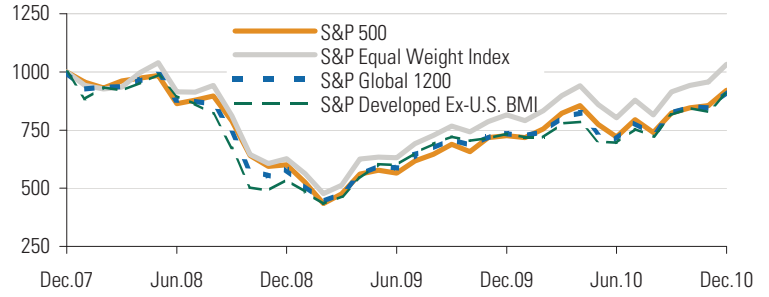
Financials



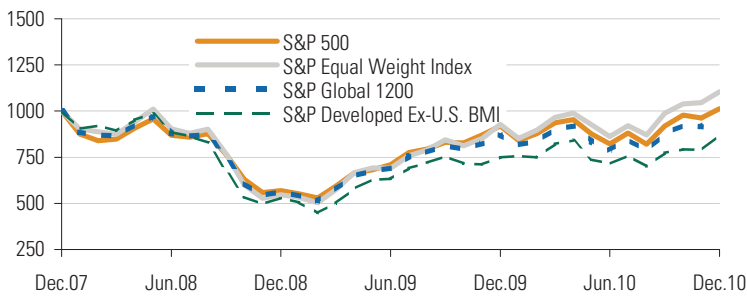
Health Care



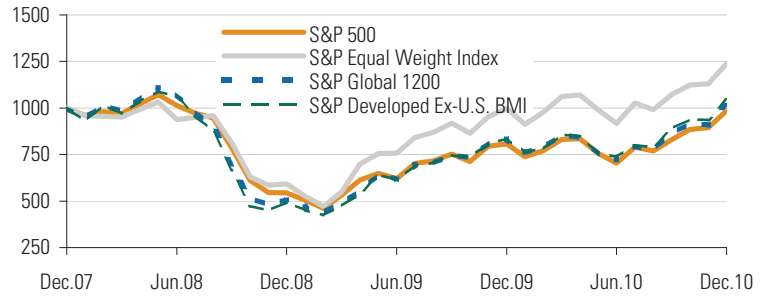
Industrials



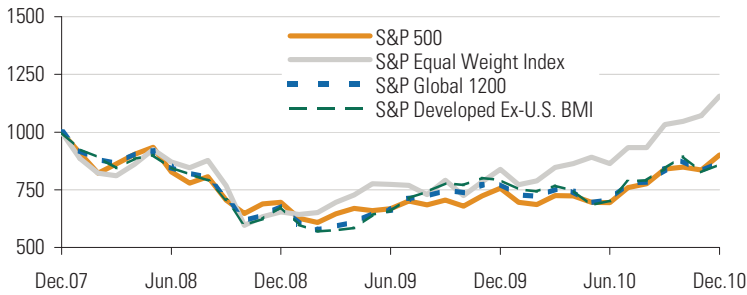
Information Technology



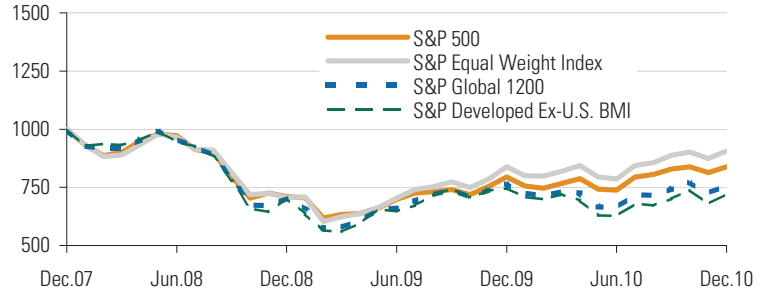
Materials



Telecommunication Services



Utilities



Source: Standard & Poor's. Data as of December 31, 2010. Charts and graphs are provided for illustrative purposes only. Index returns do not include payment of any sales charges or fees an investor would pay to purchase the securities the index represents. Such costs would lower performance. It is not possible to invest directly in an index. Past performance is not an indication of future results.

## Index Performance &amp; Characteristics

	Annualized Returns			Annualized Risk		Number of Constituents	Index Weight
	1 Year	3 Years	5 Years	3 Years Std Dev	5 Years Std Dev		
<b>S&amp;P 500</b>	15.06%	-2.86%	2.29%	22.16%	17.82%	500	
Consumer Discretionary	27.66%	6.26%	4.32%	27.34%	22.20%	80	10.6%
Consumer Staples	14.11%	3.50%	7.68%	14.53%	11.91%	41	10.6%
Energy	20.46%	-3.70%	8.31%	25.56%	22.86%	40	12.0%
Financials	12.13%	-16.25%	-10.65%	38.18%	30.44%	81	16.1%
Health Care	2.90%	-1.67%	1.84%	18.13%	15.27%	51	10.9%
Industrials	26.73%	-2.72%	3.16%	29.24%	23.26%	58	10.9%
Information Technology	10.19%	0.44%	5.02%	26.33%	22.09%	76	18.6%
Materials	22.20%	-0.45%	7.48%	30.40%	24.63%	30	3.7%
Telecommunication Services	18.97%	-3.42%	6.64%	21.10%	18.49%	9	3.1%
Utilities	5.46%	-5.71%	3.90%	17.33%	15.27%	34	3.3%
<b>S&amp;P Equal Weight Index</b>	21.91%	2.44%	4.80%	27.05%	21.55%	500	
Consumer Discretionary	27.53%	7.36%	3.87%	35.52%	28.50%	80	15.8%
Consumer Staples	18.72%	5.83%	8.63%	16.66%	13.33%	41	8.1%
Energy	27.25%	-1.38%	8.46%	34.49%	29.71%	40	8.2%
Financials	23.50%	-9.06%	-5.98%	38.98%	30.92%	81	16.5%
Health Care	11.52%	4.81%	6.85%	20.35%	16.63%	51	10.0%
Industrials	26.69%	1.08%	7.08%	29.77%	23.86%	58	11.6%
Information Technology	19.05%	3.39%	4.13%	29.54%	24.54%	76	15.1%
Materials	24.14%	7.40%	11.93%	33.01%	26.43%	30	6.0%
Telecommunication Services	37.76%	4.94%	9.06%	25.10%	20.88%	9	1.8%
Utilities	8.07%	-3.26%	5.08%	18.38%	15.93%	34	6.8%
<b>S&amp;P Global 1200</b>	11.95%	-4.06%	3.41%	24.44%	19.72%	1201	
Consumer Discretionary	23.60%	1.39%	4.37%	26.21%	21.17%	174	9.6%
Consumer Staples	13.81%	3.04%	9.58%	16.56%	13.44%	100	10.0%
Energy	11.78%	-3.77%	7.16%	27.27%	23.98%	84	11.2%
Financials	3.88%	-13.75%	-5.91%	36.54%	29.09%	220	20.3%
Health Care	2.98%	-1.11%	2.29%	17.77%	14.60%	81	8.6%
Industrials	24.44%	-2.88%	4.65%	28.50%	22.79%	184	10.9%
Information Technology	11.82%	-0.82%	4.19%	26.59%	21.97%	120	12.2%
Materials	20.96%	0.33%	13.02%	33.81%	27.72%	123	8.5%
Telecommunication Services	12.12%	-4.54%	8.19%	20.16%	17.29%	39	4.7%
Utilities	-0.99%	-8.81%	5.30%	19.65%	16.90%	76	3.9%
<b>S&amp;P Developed Ex-U.S. BMI</b>	11.96%	-4.98%	3.98%	27.34%	22.15%	4754	
Consumer Discretionary	21.83%	-2.25%	3.46%	26.69%	21.73%	801	10.8%
Consumer Staples	13.40%	1.21%	10.48%	20.01%	16.33%	297	8.5%
Energy	7.34%	-3.30%	5.73%	30.78%	26.37%	291	9.2%
Financials	2.42%	-12.58%	-3.18%	35.17%	28.12%	857	23.5%
Health Care	4.37%	0.00%	3.95%	18.51%	15.27%	265	6.9%
Industrials	23.66%	-3.18%	6.45%	30.66%	25.12%	945	13.6%
Information Technology	16.04%	-4.53%	0.54%	29.39%	23.69%	489	6.2%
Materials	25.29%	1.47%	13.94%	35.52%	29.14%	608	12.7%
Telecommunication Services	8.51%	-4.88%	7.83%	22.23%	19.25%	71	4.3%
Utilities	-3.39%	-10.33%	6.07%	22.03%	18.90%	130	4.2%

# S&P Sector Indices

Equity Indices |

December 31, 2010

## Tickers & ETFs

	Price Returns		Total Returns		ETF Product	ETF Ticker
	BLOOMBERG <sup>SM</sup>	Reuters	BLOOMBERG <sup>SM</sup>			
<b>S&amp;P 500</b>	SPX	.SPX	SPTR	SPDR		SPY
Consumer Discretionary	S5COND	.GSPD	SPTRCOND	Consumer Discretionary Select Sector SPDR Fund		XLY
Consumer Staples	S5CONS	.GSPS	SPTRCONS	Consumer Staples Select Sector SPDR Fund		XLP
Energy	S5ENRS	.GSPE	SPTRENRS	Energy Select Sector SPDR Fund		XLE
Financials	S5FINL	.GSPF	SPTRFINL	Financials Select Sector SPDR Fund		XLF
Health Care	S5HLTH	.GSPA	SPTRHLTH	Health Care Select Sector SPDR Fund		XLV
Industrials	S5INDU	.GSPI	SPTRINDU	Industrials Select Sector SPDR Fund		XLI
Information Technology	S5INFT	.GSPT	SPTRINFT	Technology Select Sector SPDR Fund		XLK
Telecommunication Services	S5TELS	.GSPL	SPTRTELS			
Materials	S5MATR	.GSPM	SPTRMATR	Materials Select Sector SPDR Fund		XLB
Utilities	S5UTIL	.GSPU	SPTRUTIL	Utilities Select Sector SPDR Fund		XLU
<b>S&amp;P Equal Weight Index</b>	SPXEW	.SPXEW	SPXEWTR	Rydex S&P Equal Weighted ETF		RSP
Consumer Discretionary	S25	.SPXEW25	SPXEWCD	Rydex S&P Equal Weight Consumer Disc ETF		RCD
Consumer Staples	S30	.SPXEW30	SPXEWCS	Rydex S&P Equal Weight Consumer Staples ETF		RHS
Energy	S10	.SPXEW10	SPXEWEN	Rydex S&P Equal Weight Energy ETF		RYE
Financials	S40	.SPXEW40	SPXEWFN	Rydex S&P Equal Weight Financial ETF		RYF
Health Care	S35	.SPXEW35	SPXEWHC	Rydex S&P Equal Weight Health Care ETF		RYH
Industrials	S20	.SPXEW20	SPXEWIN	Rydex S&P Equal Weight Industrials ETF		RGI
Information Technology	S45	.SPXEW45	SPXEWIT	Rydex S&P Equal Weight Technology ETF		RYT
Materials	S15	.SPXEW15	SPXEWMA	Rydex S&P Equal Weight Materials ETF		RTM
Telecommunication Services	S50	.SPXEW50	SPXEWTS			
Utilities	S55	.SPXEW55	SPXEWUT	Rydex S&P Equal Weight Utilities ETF		RYU
Telecom Services & Utilities	SPXWC	.SPXWC	SPXEWCTR			
<b>S&amp;P Global 1200</b>	SPGLOB	.SPGLOBAL				
Consumer Discretionary	SGD	.SGDY	SPTRGL25	iShares S&P Global Cons Disc Sector Index Fund		RXI
Consumer Staples	SGCS	.SGSY	SPTRGL30	iShares S&P Global Cons Staples Sector Index Fund		KXI
Energy	SGES	.SGEY	SPTRGL10	iShares S&P Global Energy Sector Index Fund		IXC
Financials	SGFS	.SGFY	SPTRGL40	iShares S&P Global Financials Sector Index Fund		IXG
Health Care	SGH	.SGHY	SPTRGL35	iShares S&P Global Healthcare Sector Index Fund		IXJ
Industrials	SGN	.SGNY	SPTRGL20	iShares S&P Global Industrials Sector Index Fund		EXI
Information Technology	SGI	.SGIY	SPTRGL45	iShares S&P Global Technology Sector Index Fund		IXN
Materials	SGM	.SGMY	SPTRGL15	iShares S&P Global Materials Sector Index Fund		MXI
Telecommunication Services	SGT	.SGMY	SPTRGL50	iShares S&P Global Telecom Sector Index Fund		IXP
Utilities	SGU	.SGUY	SPTRGL55	iShares S&P Global Utilities Sector Index Fund		JXI
<b>S&amp;P Developed Ex-U.S. BMI</b>	SCRTWU	.SCRTWU	STBMWUU	SPDR S&P Developed Ex-U.S. BMI		GWL
Consumer Discretionary	SPBMUCUP			SPDR S&P Int'l Consumer Discretionary Sector ETF		IPD
Consumer Staples	SPBMU3UP			SPDR S&P Int'l Consumer Staples Sector ETF		IPS
Energy	SPBMU1UP			SPDR S&P Int'l Energy Sector ETF		IPW
Financials	SPBMU4UP			SPDR S&P Int'l Financial Sector ETF		IPF
Health Care	SPBMUHUP			SPDR S&P Int'l Health Care Sector ETF		IRY
Industrials	SPBMU2UP			SPDR S&P Int'l Industrial Sector ETF		IPN
Information Technology	SPBMUTUP			SPDR S&P Int'l Technology Sector ETF		IPK
Materials	SPBMU6UP			SPDR S&P Int'l Materials Sector ETF		IRV
Telecommunication Services	SPBMU5UP			SPDR S&P Int'l Telecommunications Sector ETF		IST
Utilities	SPBMUUUP			SPDR S&P Int'l Utilities Sector ETF		IPU

## **General Disclaimer**

This document does not constitute an offer of services in jurisdictions where Standard & Poor's or its affiliates do not have the necessary licenses. Standard & Poor's receives compensation in connection with licensing its indices to third parties.

All information provided by Standard & Poor's is impersonal and not tailored to the needs of any person, entity or group of persons. Standard & Poor's and its affiliates do not sponsor, endorse, sell, promote or manage any investment fund or other vehicle that is offered by third parties and that seeks to provide an investment return based on the returns of any Standard & Poor's index. Standard & Poor's is not an investment advisor, and Standard & Poor's and its affiliates make no representation regarding the advisability of investing in any such investment fund or other vehicle. A decision to invest in any such investment fund or other vehicle should not be made in reliance on any of the statements set forth in this document. Prospective investors are advised to make an investment in any such fund or other vehicle only after carefully considering the risks associated with investing in such funds, as detailed in an offering memorandum or similar document that is prepared by or on behalf of the issuer of the investment fund or other vehicle. Inclusion of a security within an index is not a recommendation by Standard & Poor's to buy, sell, or hold such security, nor is it considered to be investment advice.

Exposure to an asset class is available through investable instruments based on an index. It is not possible to invest directly in an index. There is no assurance that investment products based on the index will accurately track index performance or provide positive investment returns. Standard & Poor's is not a tax advisor. A tax advisor should be consulted to evaluate the impact of tax-exempt securities on portfolios and the tax consequences of making any particular investment decision.

Standard & Poor's does not guarantee the accuracy and/or completeness of any Standard & Poor's index, any data included therein, or any data from which it is based, and Standard & Poor's shall have no liability for any errors, omissions, or interruptions therein. Standard & Poor's makes no warranties, express or implied, as to results to be obtained from use of information provided by Standard & Poor's and used in this service, and Standard & Poor's expressly disclaims all warranties of suitability with respect thereto. While Standard & Poor's has obtained information believed to be reliable, Standard & Poor's shall not be liable for any claims or losses of any nature in connection with information contained in this document, including but not limited to, lost profits or punitive or consequential damages, even if it is advised of the possibility of same. These materials have been prepared solely for informational purposes based upon information generally available to the public from sources believed to be reliable. Standard & Poor's makes no representation with respect to the accuracy or completeness of these materials, the content of which may change without notice. The methodology involves rebalancings and maintenance of the indices that are made periodically during each year and may not, therefore, reflect real-time information.

Analytic services and products provided by Standard & Poor's are the result of separate activities designed to preserve the independence and objectivity of each analytic process. Standard & Poor's has established policies and procedures to maintain the confidentiality of non-public information received during each analytic process. Standard & Poor's and its affiliates provide a wide range of services to, or relating to, many organizations, including issuers of securities, investment advisers, broker-dealers, investment banks, other financial institutions and financial intermediaries, and accordingly may receive fees or other economic benefits from those organizations, including organizations whose securities or services they may recommend, rate, include in model portfolios, evaluate or otherwise address.

Copyright © 2011 by Standard & Poor's Financial Services LLC. All rights reserved.

Redistribution, reproduction and/or photocopying in whole or in part is prohibited without written permission.  
S&P, S&P INDICES, S&P 500, and STANDARD & POOR'S are registered trademarks of Standard & Poor's Financial Services LLC.

The Global Industry Classification Standard (GICS<sup>®</sup>) was developed by and is the exclusive property and a trademark of Standard & Poor's and MSCI Barra. Neither MSCI Barra, Standard & Poor's nor any other party involved in making or compiling any GICS classifications makes any express or implied warranties or representations with respect to such standard or classification (or the results to be obtained by the use thereof), and all such parties hereby expressly disclaim all warranties of originality, accuracy, completeness, merchantability or fitness for a particular purpose with respect to any of such standard or classification. Without limiting any of the foregoing, in no event shall MSCI Barra, Standard & Poor's, any of their affiliates or any third party involved in making or compiling any GICS classifications have any liability for any direct, indirect, special, punitive, consequential or any other damages (including lost profits) even if notified of the possibility of such damages.